

Sales and Inventory Report
Category - Residential
Statistics for Entire MLS from 10/1/2006 - 9/30/2010

Category:1
Property Type:ATH
Area:01

Month	Year	Monthly Sales	Monthly Volume	Avg List \$	Avg Sale \$	Median Sold \$	Avg DOM	Avg CDOM	% Sold/List	Current Inventory	Months Inventory
October	2006	20	\$6,846,799	\$354,331	\$342,339	\$285,750	53	53	96.61%	156	7.80
November	2006	14	\$3,873,643	\$278,442	\$276,688	\$265,797	60	60	99.37%	152	10.85
December	2006	17	\$5,576,159	\$332,414	\$328,009	\$325,500	149	149	98.67%	151	8.88
January	2007	9	\$2,412,823	\$273,433	\$268,091	\$267,000	136	136	98.04%	143	15.88
February	2007	19	\$4,499,275	\$240,665	\$236,803	\$229,950	112	112	98.39%	196	10.31
March	2007	42	\$10,872,279	\$261,905	\$258,863	\$250,750	117	117	98.83%	199	4.73
April	2007	32	\$8,839,128	\$278,677	\$276,222	\$254,475	72	72	99.11%	223	6.96
May	2007	46	\$11,470,597	\$248,388	\$249,360	\$238,250	40	40	100.39%	221	4.80
June	2007	47	\$12,370,850	\$266,949	\$263,209	\$248,000	59	59	98.59%	206	4.38
July	2007	51	\$13,978,718	\$279,653	\$274,092	\$260,475	70	70	98.01%	195	3.82
August	2007	36	\$8,925,191	\$249,223	\$247,921	\$235,250	47	47	99.47%	203	5.63
September	2007	26	\$6,856,375	\$265,095	\$263,706	\$229,500	76	76	99.47%	194	7.46
Annual:		359	\$96,521,837	\$272,107	\$268,863	\$249,900	75	75	98.80%	187	6.25

Month	Year	Monthly Sales	Monthly Volume	Avg List \$	Avg Sale \$	Median Sold \$	Avg DOM	Avg CDOM	% Sold/List	Current Inventory	Months Inventory
October	2007	29	\$8,364,221	\$295,671	\$288,421	\$273,678	110	110	97.54%	184	6.34
November	2007	25	\$7,965,685	\$320,085	\$318,627	\$246,000	79	84	99.54%	179	7.16
December	2007	18	\$4,577,388	\$262,100	\$254,299	\$241,482	88	90	97.02%	171	9.50
January	2008	7	\$1,695,185	\$237,021	\$242,169	\$229,500	56	59	102.17%	161	23.00
February	2008	8	\$1,761,380	\$231,050	\$220,172	\$217,000	200	199	95.29%	178	22.25
March	2008	16	\$4,528,504	\$290,926	\$283,031	\$268,056	148	153	97.28%	228	14.25
April	2008	17	\$4,151,993	\$250,245	\$244,234	\$239,900	74	88	97.59%	235	13.82
May	2008	39	\$10,538,953	\$270,789	\$270,229	\$246,000	61	95	99.79%	229	5.87
June	2008	37	\$9,165,040	\$250,763	\$247,703	\$220,000	98	105	98.77%	231	6.24
July	2008	24	\$6,035,506	\$253,395	\$251,479	\$239,565	69	69	99.24%	221	9.20
August	2008	18	\$4,433,998	\$256,663	\$246,333	\$236,580	60	65	95.97%	214	11.88
September	2008	19	\$5,081,659	\$282,581	\$267,455	\$238,559	153	153	94.64%	203	10.68
Annual:		257	\$68,299,512	\$270,896	\$265,756	\$240,000	93	102	98.10%	203	9.47

Month	Year	Monthly Sales	Monthly Volume	Avg List \$	Avg Sale \$	Median Sold \$	Avg DOM	Avg CDOM	% Sold/List	Current Inventory	Months Inventory
October	2008	9	\$2,056,565	\$232,071	\$228,507	\$251,900	74	113	98.46%	193	21.44
November	2008	9	\$2,442,000	\$278,827	\$271,333	\$235,000	92	90	97.31%	180	20.00
December	2008	11	\$3,010,401	\$277,600	\$273,672	\$279,000	89	111	98.58%	166	15.09
January	2009	17	\$4,475,486	\$265,790	\$263,263	\$262,190	70	88	99.04%	175	10.29
February	2009	12	\$4,575,548	\$377,571	\$381,295	\$262,995	79	94	100.98%	191	15.91
March	2009	14	\$3,280,955	\$229,037	\$234,353	\$247,972	51	103	102.32%	195	13.92
April	2009	15	\$3,101,237	\$206,062	\$206,749	\$197,600	77	115	100.33%	194	12.93
May	2009	33	\$8,390,802	\$256,706	\$254,266	\$240,000	76	113	99.04%	178	5.39
June	2009	49	\$12,207,972	\$253,668	\$249,142	\$232,000	84	96	98.21%	187	3.81
July	2009	49	\$12,245,441	\$250,950	\$249,906	\$238,995	67	80	99.58%	174	3.55
August	2009	27	\$6,425,925	\$235,758	\$237,997	\$250,000	124	135	100.94%	170	6.29
September	2009	22	\$5,946,802	\$266,997	\$270,309	\$245,457	42	54	101.24%	169	7.68
Annual:		267	\$68,159,134	\$256,312	\$255,277	\$242,032	77	98	99.59%	181	8.13

Month	Year	Monthly Sales	Monthly Volume	Avg List \$	Avg Sale \$	Median Sold \$	Avg DOM	Avg CDOM	% Sold/List	Current Inventory	Months Inventory
October	2009	22	\$6,907,715	\$327,041	\$313,987	\$237,357	129	136	96.00%	155	7.04
November	2009	37	\$8,757,719	\$232,878	\$236,695	\$229,300	89	95	101.63%	137	3.70
December	2009	18	\$4,309,022	\$242,517	\$239,390	\$226,795	75	84	98.71%	130	7.22
January	2010	14	\$3,595,650	\$260,288	\$256,832	\$248,647	103	154	98.67%	123	8.78
February	2010	7	\$1,412,650	\$208,585	\$201,807	\$198,000	152	200	96.75%	119	17.00
March	2010	17	\$3,883,700	\$235,564	\$228,452	\$200,000	76	104	96.98%	153	9.00
April	2010	19	\$4,969,806	\$261,143	\$261,568	\$223,024	60	102	100.16%	144	7.57
May	2010	50	\$12,006,632	\$240,297	\$240,132	\$234,817	106	126	99.93%	137	2.74
June	2010	56	\$13,559,799	\$231,421	\$242,139	\$240,421	47	49	104.63%	130	2.32
July	2010	21	\$4,957,819	\$239,457	\$236,086	\$215,000	144	163	98.59%	131	6.23
August	2010	12	\$3,109,931	\$264,345	\$259,160	\$216,750	198	225	98.03%	134	11.16
September	2010	25	\$6,273,227	\$250,385	\$250,929	\$242,380	39	66	100.21%	138	5.52
Annual:		298	\$73,743,670	\$247,255	\$247,461	\$229,950	90	108	100.08%	136	5.47

Annual:	2006 - 2010	1181	\$306,724,153	\$262,002	\$259,715	\$240,000	94	83	99.12%	177	7.19
---------	-------------	------	---------------	-----------	-----------	-----------	----	----	--------	-----	------

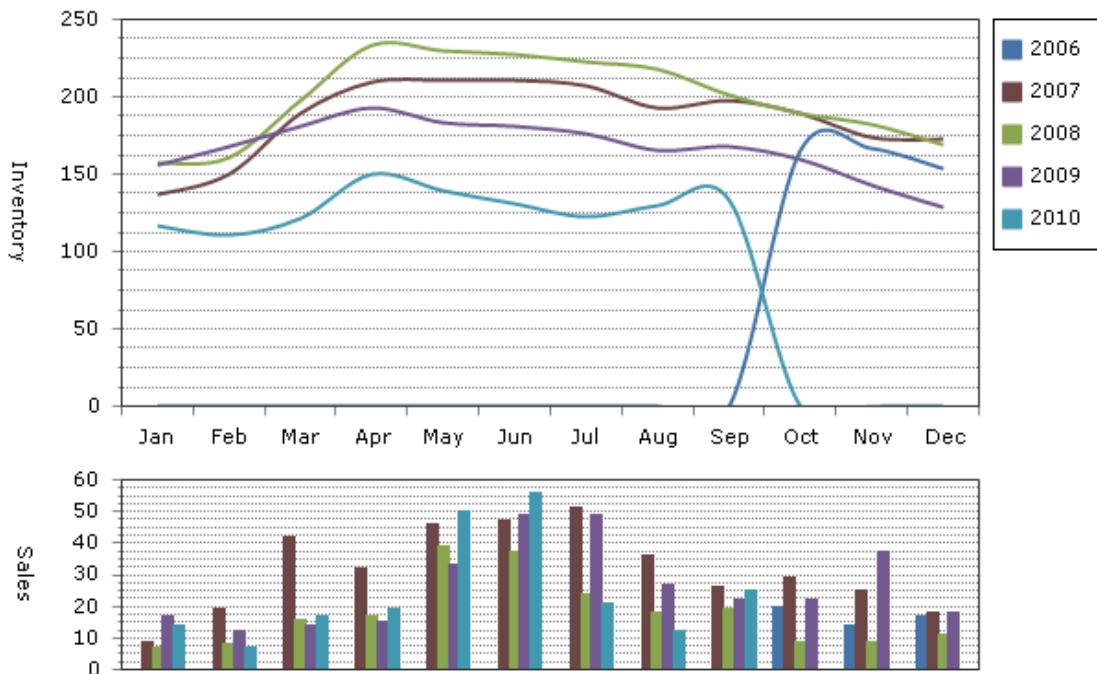
Note: The "Current Inventory" column(s) reflect the number of active(on market) listings on the 16th day of each month.

The "Months Inventory" column(s) value(s) equal "Current Inventory" divided by "Monthly Sales".

This reflects how many months it would take to sell out of inventory at the current month's rate of sale.

- Total Months Inventory = Total Current Inventory / (Total Monthly Sales/12 Months)

Sales and Inventory: 10/1/2006 - 9/30/2010



-Information on this report is not guaranteed. There is no express or implied warranty by MLS of the accuracy of information which should be independently verified.--

Copyright: 2010 by the Charlottesville Area Association of REALTORS®.

Jim Duncan - www.RealCentralVA.com - 434-242-7140

Prepared by JIM DUNCAN of NEST REALTY GROUP on Wednesday, November 10, 2010 6:49 AM.