

Sales and Inventory Report
Category - Residential
Statistics for Entire MLS from 10/1/2006 - 9/30/2010

Category:1
Property Type:ATH
Area:05

Month	Year	Monthly Sales	Monthly Volume	Avg List \$	Avg Sale \$	Median Sold \$	Avg DOM	Avg CDOM	% Sold/List	Current Inventory	Months Inventory
October	2006	3	\$444,800	\$163,933	\$148,266	\$164,900	146	146	90.44%	48	16.00
November	2006	6	\$1,076,800	\$194,916	\$179,466	\$145,000	131	131	92.07%	51	8.50
December	2006	3	\$477,950	\$157,116	\$159,316	\$168,000	137	137	101.40%	52	17.33
January	2007	3	\$764,900	\$263,133	\$254,966	\$270,000	27	27	96.89%	77	25.66
February	2007	4	\$928,000	\$234,150	\$232,000	\$216,500	120	120	99.08%	86	21.50
March	2007	8	\$2,040,340	\$257,577	\$255,042	\$232,500	113	113	99.01%	84	10.50
April	2007	12	\$3,224,575	\$266,820	\$268,714	\$280,900	47	47	100.70%	86	7.16
May	2007	12	\$2,945,691	\$241,198	\$245,474	\$203,200	36	36	101.77%	88	7.33
June	2007	14	\$3,985,711	\$276,968	\$284,693	\$329,870	43	43	102.78%	88	6.28
July	2007	12	\$2,873,270	\$236,621	\$239,439	\$221,475	59	59	101.19%	77	6.41
August	2007	13	\$3,485,325	\$260,011	\$268,101	\$297,500	80	80	103.11%	71	5.46
September	2007	8	\$1,966,498	\$237,623	\$245,812	\$246,500	148	148	103.44%	73	9.12
Annual:		98	\$24,213,860	\$245,037	\$247,080	\$233,450	78	78	100.83%	73	8.93

Month	Year	Monthly Sales	Monthly Volume	Avg List \$	Avg Sale \$	Median Sold \$	Avg DOM	Avg CDOM	% Sold/List	Current Inventory	Months Inventory
October	2007	4	\$1,110,703	\$262,492	\$277,675	\$300,926	124	124	105.78%	66	16.50
November	2007	11	\$2,930,682	\$249,347	\$266,425	\$331,964	119	120	106.84%	60	5.45
December	2007	4	\$1,134,190	\$274,992	\$283,547	\$277,495	128	130	103.11%	68	17.00
January	2008	3	\$779,481	\$270,627	\$259,827	\$210,000	195	252	96.00%	78	26.00
February	2008	3	\$841,278	\$293,266	\$280,426	\$309,278	197	231	95.62%	77	25.66
March	2008	11	\$2,812,214	\$262,202	\$255,655	\$272,686	240	166	97.50%	79	7.18
April	2008	10	\$2,632,056	\$272,247	\$263,205	\$258,230	150	108	96.67%	86	8.60
May	2008	16	\$4,241,226	\$274,371	\$265,076	\$264,000	234	197	96.61%	82	5.12
June	2008	9	\$2,230,614	\$248,348	\$247,846	\$263,275	119	88	99.79%	83	9.22
July	2008	15	\$3,512,943	\$238,436	\$234,196	\$243,000	134	136	98.22%	85	5.66
August	2008	10	\$2,207,816	\$217,766	\$220,781	\$221,495	84	78	101.38%	86	8.60
September	2008	10	\$2,310,248	\$213,775	\$231,024	\$232,675	55	32	108.06%	78	7.80
Annual:		106	\$26,743,451	\$251,963	\$252,296	\$267,180	149	130	100.13%	77	8.71

Month	Year	Monthly Sales	Monthly Volume	Avg List \$	Avg Sale \$	Median Sold \$	Avg DOM	Avg CDOM	% Sold/List	Current Inventory	Months Inventory
October	2008	7	\$1,752,035	\$248,282	\$250,290	\$285,000	170	178	100.80%	73	10.42
November	2008	7	\$1,768,395	\$234,835	\$252,627	\$276,610	76	30	107.57%	61	8.71
December	2008	5	\$1,189,718	\$241,240	\$237,943	\$266,017	188	166	98.63%	56	11.20
January	2009	2	\$535,337	\$277,945	\$267,668	\$267,668	50	71	96.30%	57	28.50
February	2009	13	\$3,724,197	\$269,805	\$286,476	\$295,750	192	77	106.17%	63	4.84
March	2009	10	\$2,523,482	\$232,414	\$252,348	\$268,039	235	79	108.57%	60	6.00
April	2009	5	\$1,032,565	\$200,936	\$206,513	\$169,900	191	75	102.77%	59	11.80
May	2009	8	\$1,788,010	\$218,535	\$223,501	\$211,250	140	182	102.27%	65	8.12
June	2009	11	\$2,100,850	\$196,526	\$190,986	\$195,000	19	47	97.18%	66	6.00
July	2009	8	\$1,835,000	\$235,237	\$229,375	\$234,250	247	247	97.50%	60	7.50
August	2009	12	\$2,465,000	\$212,529	\$205,416	\$196,500	136	139	96.65%	53	4.41
September	2009	5	\$1,286,500	\$274,079	\$257,300	\$285,000	190	196	93.87%	49	9.80
Annual:		93	\$22,001,089	\$233,257	\$236,570	\$252,500	155	120	101.42%	60	7.74

Month	Year	Monthly Sales	Monthly Volume	Avg List \$	Avg Sale \$	Median Sold \$	Avg DOM	Avg CDOM	% Sold/List	Current Inventory	Months Inventory
October	2009	3	\$775,500	\$269,966	\$258,500	\$308,500	97	97	95.75%	48	16.00
November	2009	11	\$2,255,850	\$211,654	\$205,077	\$225,000	195	195	96.89%	46	4.18
December	2009	3	\$749,610	\$254,733	\$249,870	\$239,000	77	77	98.09%	51	17.00
January	2010	2	\$339,900	\$172,400	\$169,950	\$169,950	131	141	98.57%	46	23.00
February	2010	1	\$245,000	\$269,000	\$245,000	\$245,000	32	32	91.07%	47	47.00
March	2010	4	\$857,300	\$217,050	\$214,325	\$224,900	122	124	98.74%	49	12.25
April	2010	3	\$398,000	\$134,300	\$132,666	\$138,000	166	164	98.78%	50	16.66
May	2010	7	\$1,316,500	\$197,700	\$188,071	\$199,900	76	131	95.12%	49	7.00
June	2010	8	\$1,795,170	\$237,575	\$224,396	\$240,000	153	153	94.45%	48	6.00
July	2010	3	\$599,900	\$199,963	\$199,966	\$180,000	99	99	100.00%	43	14.33
August	2010	5	\$715,500	\$150,640	\$143,100	\$115,000	221	232	94.99%	32	6.40
September	2010	2	\$494,000	\$259,450	\$247,000	\$247,000	372	400	95.20%	31	15.50
Annual:		52	\$10,542,230	\$210,455	\$202,735	\$201,800	151	161	96.33%	45	10.38

Annual:	2006 - 2010	349	\$83,500,630	\$238,849	\$239,256	\$243,500	117	131	100.17%	64	8.80
---------	-------------	-----	--------------	-----------	-----------	-----------	-----	-----	---------	----	------

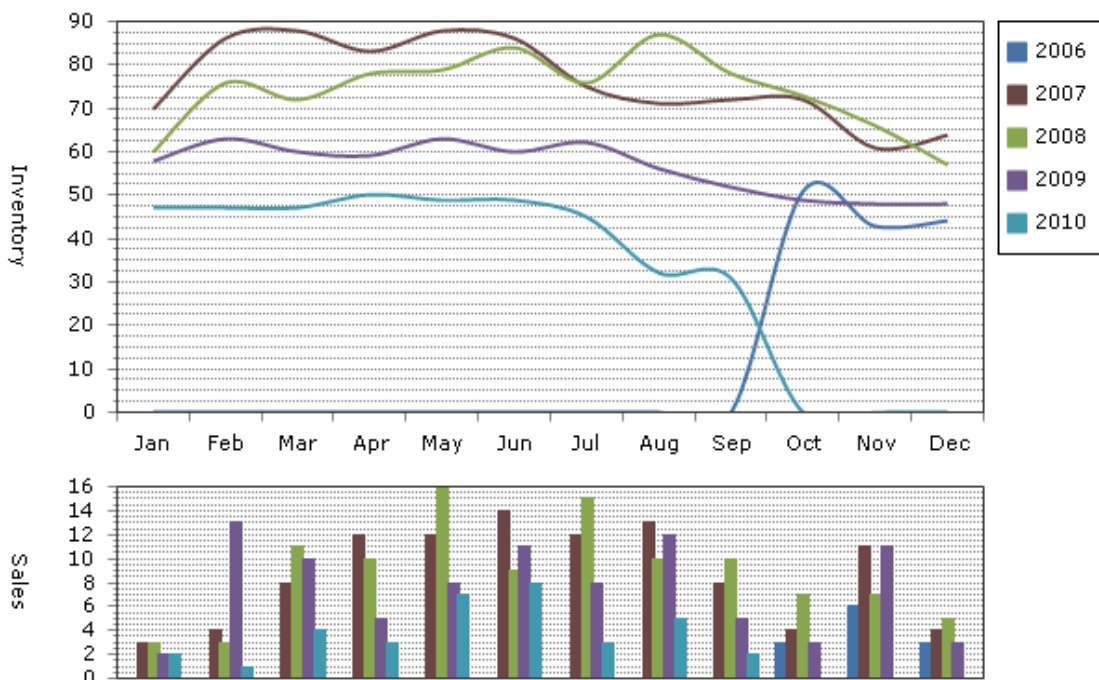
Note: The "Current Inventory" column(s) reflect the number of active(on market) listings on the 16th day of each month.

The "Months Inventory" column(s) value(s) equal "Current Inventory" divided by "Monthly Sales".

This reflects how many months it would take to sell out of inventory at the current month's rate of sale.

- Total Months Inventory = Total Current Inventory / (Total Monthly Sales/12 Months)

Sales and Inventory: 10/1/2006 - 9/30/2010



-Information on this report is not guaranteed. There is no express or implied warranty by MLS of the accuracy of information which should be independently verified.-

Copyright: 2010 by the Charlottesville Area Association of REALTORS®.

Jim Duncan - www.RealCentralVA.com - 434-242-7140

Prepared by JIM DUNCAN of NEST REALTY GROUP on Wednesday, November 10, 2010 6:52 AM.