

Sales and Inventory Report
Category - Residential
Statistics for Entire MLS from 12/1/2006 - 11/30/2010

Category:1
Property Type:ATH
Area:01,05,08,10,13

Month	Year	Monthly Sales	Monthly Volume	Avg List \$	Avg Sale \$	Median Sold \$	Avg DOM	Avg CDOM	% Sold/List	Current Inventory	Months Inventory
December	2006	21	\$6,483,109	\$313,875	\$308,719	\$319,000	144	144	98.35%	214	10.19
January	2007	12	\$3,177,723	\$270,858	\$264,810	\$268,500	109	109	97.76%	233	19.41
February	2007	23	\$5,427,275	\$239,532	\$235,968	\$229,950	113	113	98.51%	297	12.91
March	2007	50	\$12,912,619	\$261,212	\$258,252	\$250,750	117	117	98.86%	299	5.98
April	2007	44	\$12,063,703	\$275,444	\$274,175	\$259,000	65	65	99.53%	325	7.38
May	2007	59	\$14,941,288	\$252,368	\$253,242	\$236,500	41	41	100.34%	325	5.50
June	2007	61	\$16,356,561	\$269,248	\$268,140	\$250,000	55	55	99.58%	310	5.08
July	2007	63	\$16,851,988	\$271,456	\$267,491	\$255,700	68	68	98.53%	285	4.52
August	2007	49	\$12,410,516	\$252,085	\$253,275	\$241,400	56	56	100.47%	291	5.93
September	2007	34	\$8,822,873	\$258,631	\$259,496	\$229,500	93	93	100.33%	283	8.32
October	2007	33	\$9,474,924	\$291,650	\$287,118	\$273,678	112	112	98.44%	268	8.12
November	2007	36	\$10,896,367	\$298,471	\$302,676	\$257,450	91	95	101.40%	257	7.13
Annual:		485	\$129,818,946	\$268,993	\$267,667	\$249,000	79	80	99.50%	282	6.97

Month	Year	Monthly Sales	Monthly Volume	Avg List \$	Avg Sale \$	Median Sold \$	Avg DOM	Avg CDOM	% Sold/List	Current Inventory	Months Inventory
December	2007	24	\$6,272,758	\$266,132	\$261,364	\$259,032	95	97	98.20%	259	10.79
January	2008	10	\$2,474,666	\$247,103	\$247,466	\$227,200	97	117	100.14%	259	25.90
February	2008	11	\$2,602,658	\$248,018	\$236,605	\$219,000	199	208	95.39%	286	26.00
March	2008	27	\$7,340,718	\$279,224	\$271,878	\$272,428	185	158	97.36%	337	12.48
April	2008	28	\$7,287,399	\$268,790	\$260,264	\$245,000	105	98	96.82%	353	12.60
May	2008	56	\$15,054,179	\$271,870	\$268,824	\$250,000	112	126	98.87%	349	6.23
June	2008	47	\$11,657,457	\$250,535	\$248,031	\$225,500	103	104	99.00%	347	7.38
July	2008	40	\$9,881,554	\$249,778	\$247,038	\$242,565	92	93	98.90%	341	8.52
August	2008	29	\$6,979,514	\$245,887	\$240,672	\$239,990	66	67	97.87%	337	11.62
September	2008	31	\$8,011,907	\$263,766	\$258,448	\$238,559	121	114	97.98%	314	10.12
October	2008	17	\$4,058,500	\$239,795	\$238,735	\$259,000	122	146	99.55%	300	17.64
November	2008	18	\$4,841,595	\$265,805	\$268,977	\$263,450	93	79	101.19%	274	15.22
Annual:		338	\$86,462,905	\$259,796	\$255,807	\$246,500	111	112	98.46%	313	11.11

Month	Year	Monthly Sales	Monthly Volume	Avg List \$	Avg Sale \$	Median Sold \$	Avg DOM	Avg CDOM	% Sold/List	Current Inventory	Months Inventory
December	2008	17	\$4,481,119	\$267,335	\$263,595	\$279,000	116	123	98.60%	256	15.05
January	2009	19	\$5,010,823	\$267,070	\$263,727	\$262,727	68	86	98.74%	266	14.00
February	2009	25	\$8,299,745	\$321,533	\$331,989	\$273,574	138	85	103.25%	289	11.56
March	2009	27	\$6,536,427	\$232,795	\$242,089	\$251,985	144	113	103.99%	285	10.55
April	2009	20	\$4,133,802	\$204,780	\$206,690	\$191,300	106	105	100.93%	279	13.95
May	2009	41	\$10,178,812	\$249,258	\$248,263	\$240,000	88	126	99.60%	271	6.60
June	2009	60	\$14,308,822	\$243,192	\$238,480	\$227,000	72	87	98.06%	280	4.66
July	2009	57	\$14,080,441	\$248,744	\$247,025	\$238,500	92	104	99.30%	261	4.57
August	2009	39	\$8,890,925	\$228,610	\$227,972	\$214,900	128	136	99.72%	250	6.41
September	2009	28	\$7,430,495	\$265,508	\$265,374	\$245,457	67	77	99.94%	248	8.85
October	2009	30	\$8,632,815	\$299,310	\$287,760	\$226,750	116	128	96.14%	234	7.80
November	2009	49	\$11,258,569	\$230,453	\$229,766	\$229,300	114	122	99.70%	213	4.34
Annual:		412	\$103,242,795	\$251,576	\$250,589	\$239,462	101	108	99.60%	261	7.60

Month	Year	Monthly Sales	Monthly Volume	Avg List \$	Avg Sale \$	Median Sold \$	Avg DOM	Avg CDOM	% Sold/List	Current Inventory	Months Inventory
December	2009	23	\$5,563,632	\$248,668	\$241,897	\$238,630	114	144	97.27%	211	9.17
January	2010	17	\$4,206,150	\$250,554	\$247,420	\$249,050	100	143	98.74%	194	11.41
February	2010	9	\$1,837,650	\$213,222	\$204,183	\$198,000	142	179	95.76%	189	21.00
March	2010	21	\$4,741,000	\$232,038	\$225,761	\$200,000	84	108	97.29%	228	10.85
April	2010	25	\$5,868,066	\$232,184	\$234,722	\$206,800	71	99	101.09%	225	9.00
May	2010	59	\$13,650,856	\$232,339	\$231,370	\$220,000	99	123	99.58%	218	3.69
June	2010	68	\$16,282,236	\$233,015	\$239,444	\$240,421	64	65	102.75%	211	3.10
July	2010	26	\$6,077,669	\$237,267	\$233,756	\$232,450	132	184	98.52%	210	8.07
August	2010	19	\$4,151,686	\$222,385	\$218,509	\$187,000	183	203	98.25%	199	10.47
September	2010	29	\$7,090,882	\$244,086	\$244,513	\$240,890	59	85	100.17%	200	6.89
October	2010	11	\$2,375,542	\$216,064	\$215,958	\$214,925	52	49	99.95%	201	18.27
November	2010	17	\$3,710,358	\$223,572	\$218,256	\$228,000	59	85	97.62%	187	11.00
Annual:		324	\$75,555,727	\$233,884	\$233,196	\$226,182	91	114	99.70%	206	7.62

Annual:	2006 - 2010	1559	\$395,080,373	\$255,100	\$253,419	\$240,000	95	101	99.34%	266	8.18
----------------	--------------------	-------------	----------------------	------------------	------------------	------------------	-----------	------------	---------------	------------	-------------

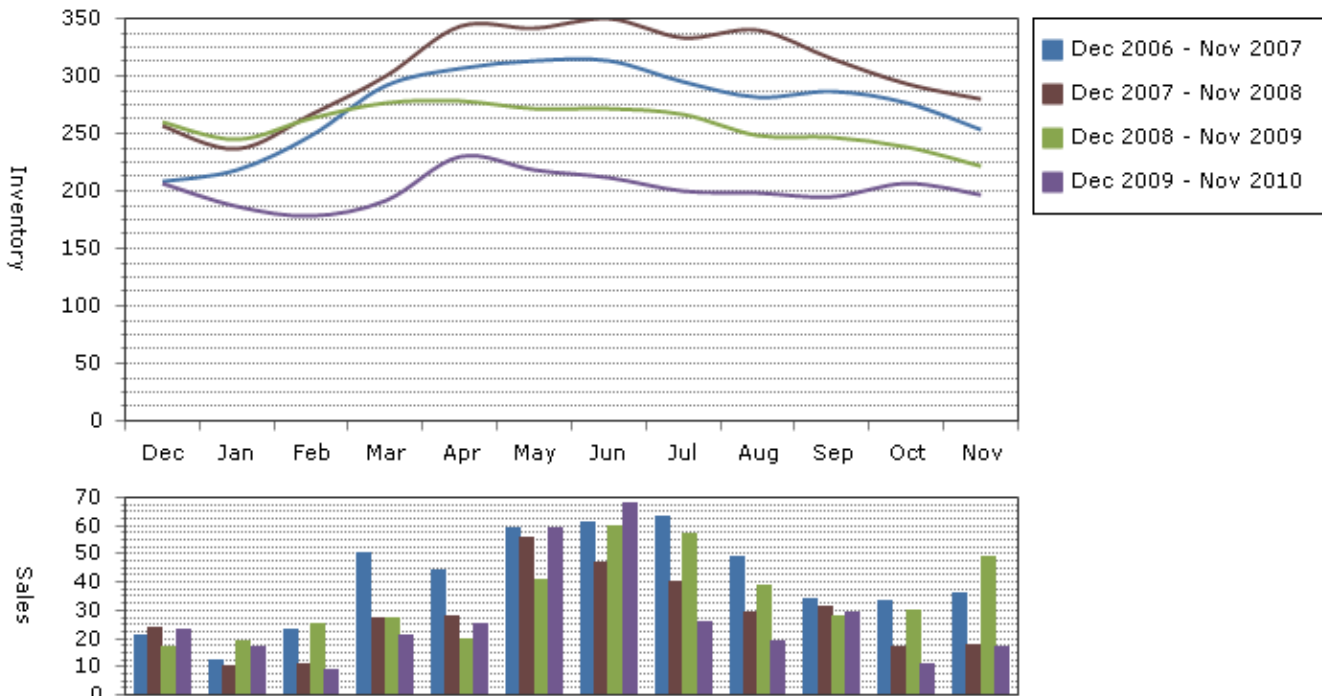
Note: The "Current Inventory" column(s) reflect the number of active(on market) listings on the 16th day of each month.

The "Months Inventory" column(s) value(s) equal "Current Inventory" divided by "Monthly Sales".

This reflects how many months it would take to sell out of inventory at the current month's rate of sale.

- Total Months Inventory = Total Current Inventory / (Total Monthly Sales/12 Months)

Sales and Inventory: 12/1/2006 - 11/30/2010



--Information on this report is not guaranteed. There is no express or implied warranty by MLS of the accuracy of information which should be independently verified.--

Copyright: 2010 by the Charlottesville Area Association of REALTORS®.

Jim Duncan - www.RealCentralVA.com - 434-242-7140

Prepared by JIM DUNCAN of NEST REALTY GROUP on Friday, December 31, 2010 8:48 AM.