

Sales and Inventory Report
Category - Residential
Statistics for Entire MLS from 4/1/2009 - 3/31/2013

Category:1
Area:01,05,08,10,13

Month	Year	Monthly Sales	Monthly Volume	Avg List \$	Avg Sale \$	Median Sold \$	Avg DOM	Avg CDOM	% Sold/List	Current Inventory	Months Inventory
April	2009	135	\$44,594,590	\$355,865	\$330,330	\$225,000	135	160	92.82%	2614	19.36
May	2009	199	\$65,739,242	\$347,921	\$330,347	\$281,440	109	152	94.94%	2685	13.49
June	2009	261	\$77,392,719	\$309,450	\$296,523	\$247,000	100	128	95.82%	2637	10.10
July	2009	296	\$104,032,550	\$376,399	\$351,461	\$274,000	106	135	93.37%	2580	8.71
August	2009	216	\$71,509,345	\$347,677	\$331,061	\$275,000	108	144	95.22%	2557	11.83
September	2009	174	\$54,737,977	\$329,585	\$314,586	\$277,130	96	121	95.44%	2519	14.47
October	2009	167	\$53,349,297	\$344,644	\$319,456	\$230,000	115	147	92.69%	2494	14.93
November	2009	206	\$61,717,790	\$309,794	\$299,600	\$260,832	128	161	96.70%	2399	11.64
December	2009	152	\$63,516,039	\$445,005	\$417,868	\$264,632	105	138	93.90%	2263	14.88
January	2010	106	\$29,478,043	\$294,037	\$278,094	\$229,447	110	158	94.57%	2146	20.24
February	2010	108	\$35,233,114	\$348,435	\$326,232	\$272,450	137	190	93.62%	2238	20.72
March	2010	147	\$47,416,947	\$342,946	\$322,564	\$249,000	140	166	94.05%	2404	16.35
Annual:		2167	\$708,717,653	\$346,161	\$327,050	\$259,000	113	147	94.47%	2461	13.62

Month	Year	Monthly Sales	Monthly Volume	Avg List \$	Avg Sale \$	Median Sold \$	Avg DOM	Avg CDOM	% Sold/List	Current Inventory	Months Inventory
April	2010	193	\$66,176,660	\$360,934	\$342,884	\$266,265	128	167	94.99%	2642	13.68
May	2010	257	\$74,322,293	\$299,080	\$289,191	\$250,390	104	136	96.69%	2689	10.46
June	2010	345	\$115,035,495	\$342,811	\$333,436	\$272,000	83	106	97.26%	2716	7.87
July	2010	183	\$64,480,035	\$366,698	\$352,349	\$285,000	111	156	96.08%	2703	14.77
August	2010	190	\$59,533,233	\$327,441	\$313,332	\$248,000	112	154	95.69%	2625	13.81
September	2010	172	\$53,369,607	\$325,921	\$310,288	\$256,500	96	125	95.20%	2611	15.18
October	2010	135	\$55,106,993	\$425,300	\$408,199	\$265,000	113	156	95.97%	2538	18.80
November	2010	164	\$59,791,869	\$394,273	\$364,584	\$260,200	110	144	92.47%	2353	14.34
December	2010	174	\$56,432,718	\$342,357	\$324,325	\$235,000	118	147	94.73%	2178	12.51
January	2011	130	\$45,366,595	\$376,168	\$348,973	\$225,000	128	154	92.77%	2038	15.67
February	2011	112	\$32,197,452	\$305,150	\$287,477	\$258,095	148	212	94.20%	2149	19.18
March	2011	160	\$47,244,080	\$309,307	\$295,275	\$232,000	132	172	95.46%	2311	14.44
Annual:		2215	\$729,057,030	\$345,095	\$329,145	\$259,264	111	147	95.37%	2463	13.34

Month	Year	Monthly Sales	Monthly Volume	Avg List \$	Avg Sale \$	Median Sold \$	Avg DOM	Avg CDOM	% Sold/List	Current Inventory	Months Inventory
April	2011	205	\$72,395,245	\$370,193	\$353,147	\$260,000	131	168	95.39%	2500	12.19
May	2011	222	\$64,668,824	\$303,529	\$291,301	\$251,777	98	127	95.97%	2563	11.54
June	2011	291	\$89,936,375	\$325,211	\$309,059	\$250,000	101	133	95.03%	2568	8.82
July	2011	196	\$58,195,281	\$312,145	\$296,914	\$245,800	95	120	95.12%	2531	12.91
August	2011	214	\$66,326,669	\$326,951	\$309,937	\$251,940	98	124	94.79%	2425	11.33
September	2011	152	\$43,271,916	\$295,248	\$284,683	\$234,847	107	128	96.42%	2424	15.94
October	2011	160	\$50,912,346	\$334,759	\$318,202	\$266,000	119	170	95.05%	2394	14.96
November	2011	158	\$49,978,018	\$329,630	\$316,316	\$245,175	109	128	95.96%	2229	14.10
December	2011	177	\$54,725,154	\$329,653	\$309,181	\$238,000	148	179	93.78%	2034	11.49
January	2012	133	\$36,801,054	\$292,694	\$276,699	\$230,000	120	173	94.53%	1918	14.42
February	2012	131	\$36,412,090	\$295,973	\$277,954	\$205,000	125	173	93.91%	1941	14.81
March	2012	217	\$63,784,649	\$305,913	\$293,938	\$250,000	113	149	96.08%	2029	9.35
Annual:		2256	\$687,407,621	\$320,040	\$304,701	\$248,000	112	145	95.20%	2296	12.21

Month	Year	Monthly Sales	Monthly Volume	Avg List \$	Avg Sale \$	Median Sold \$	Avg DOM	Avg CDOM	% Sold/List	Current Inventory	Months Inventory
April	2012	218	\$67,237,417	\$328,001	\$308,428	\$246,250	106	166	94.03%	2203	10.10
May	2012	257	\$75,953,148	\$304,954	\$295,537	\$259,935	101	142	96.91%	2232	8.68
June	2012	301	\$99,535,081	\$346,731	\$330,681	\$260,000	94	131	95.37%	2238	7.43
July	2012	236	\$71,655,931	\$314,814	\$303,626	\$259,728	92	108	96.44%	2157	9.13
August	2012	248	\$82,373,776	\$355,374	\$332,152	\$232,122	98	108	93.46%	2121	8.55
September	2012	194	\$68,205,215	\$425,952	\$351,573	\$250,952	131	170	82.53%	2064	10.63
October	2012	198	\$63,183,788	\$352,190	\$319,110	\$241,250	121	149	90.60%	1978	9.98
November	2012	195	\$68,565,499	\$372,912	\$351,617	\$298,200	125	153	94.28%	1875	9.61
December	2012	198	\$61,571,639	\$327,648	\$310,967	\$247,000	112	138	94.90%	1776	8.96

January	2013	155	\$39,872,224	\$270,491	\$257,240	\$225,200	127	160	95.10%	1701	10.97
February	2013	143	\$44,754,214	\$330,481	\$312,966	\$238,000	144	197	94.70%	1888	13.20
March	2013	163	\$46,214,504	\$298,030	\$283,524	\$240,000	117	159	95.13%	2158	13.23
Annual:		2506	\$789,122,436	\$336,950	\$314,893	\$249,900	111	145	93.45%	2033	9.73

Annual:	2009 - 2013	9144	\$2,914,304,740	\$336,934	\$318,712	\$253,486	112	146	94.59%	2313	12.14
----------------	--------------------	-------------	------------------------	------------------	------------------	------------------	------------	------------	---------------	-------------	--------------

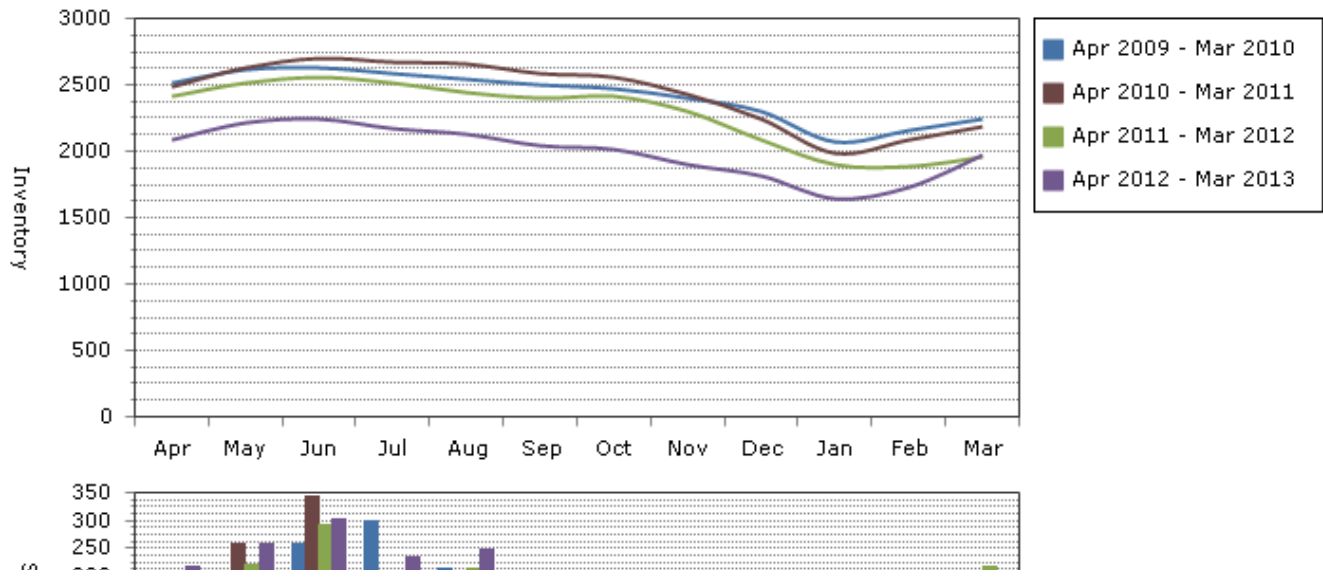
Note: The "Current Inventory" column(s) reflect the number of active(on market) listings on the 16th day of each month.

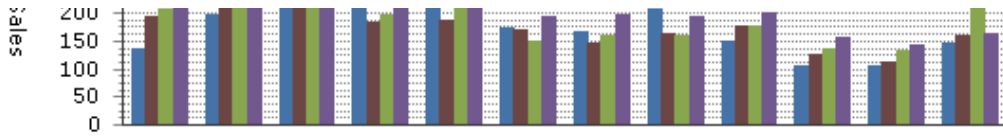
The "Months Inventory" column(s) value(s) equal "Current Inventory" divided by "Monthly Sales".

This reflects how many months it would take to sell out of inventory at the current month's rate of sale.

- Total Months Inventory = Total Current Inventory / (Total Monthly Sales/12 Months)

Sales and Inventory: 4/1/2009 - 3/31/2013





--Information on this report is not guaranteed. There is no express or implied warranty by MLS of the accuracy of information which should be independently verified.--
 Copyright: 2013 by the Charlottesville Area Association of REALTORS®.
 Jim Duncan - www.RealCentralVA.com - 434-242-7140
 Prepared by JIM DUNCAN of NEST REALTY GROUP on Sunday, April 07, 2013 8:11 AM.