

**Sales and Inventory Report**  
**Category - Residential**  
**Statistics for Entire MLS from 2/1/2010 - 1/31/2014**

Category:1  
Area:01

Month	Year	Monthly Sales	Monthly Volume	Avg List \$	Avg Sale \$	Median Sold \$	Avg DOM	Avg CDOM	% Sold/List	Current Inventory	Months Inventory
February	2010	6	\$1,592,400	\$268,450	\$265,400	\$277,000	104	268	98.86%	134	22.33
March	2010	12	\$4,789,013	\$425,391	\$399,084	\$323,750	130	151	93.81%	156	13.00
April	2010	10	\$2,956,112	\$307,241	\$295,611	\$252,500	191	224	96.21%	187	18.70
May	2010	17	\$4,966,148	\$299,132	\$292,126	\$305,000	94	121	97.65%	190	11.17
June	2010	27	\$10,261,409	\$387,801	\$380,052	\$372,000	45	91	98.00%	194	7.18
July	2010	12	\$4,504,397	\$375,999	\$375,366	\$322,684	59	67	99.83%	203	16.91
August	2010	17	\$6,618,422	\$395,467	\$389,318	\$321,259	100	92	98.44%	198	11.64
September	2010	20	\$6,936,606	\$352,439	\$346,830	\$299,487	85	98	98.40%	191	9.55
October	2010	23	\$7,979,790	\$353,223	\$346,947	\$317,179	79	95	98.22%	188	8.17
November	2010	18	\$5,910,803	\$331,428	\$328,377	\$293,582	39	69	99.07%	180	10.00
December	2010	18	\$4,733,176	\$273,000	\$262,954	\$266,517	74	107	96.32%	168	9.33
January	2011	9	\$2,552,334	\$296,660	\$283,592	\$288,000	121	171	95.59%	156	17.33
<b>Annual:</b>		<b>189</b>	<b>\$63,800,610</b>	<b>\$345,509</b>	<b>\$337,569</b>	<b>\$310,000</b>	<b>84</b>	<b>113</b>	<b>97.70%</b>	<b>179</b>	<b>11.36</b>

Month	Year	Monthly Sales	Monthly Volume	Avg List \$	Avg Sale \$	Median Sold \$	Avg DOM	Avg CDOM	% Sold/List	Current Inventory	Months Inventory
February	2011	10	\$2,876,465	\$294,329	\$287,646	\$290,000	195	188	97.72%	175	17.50
March	2011	15	\$4,481,693	\$302,559	\$298,779	\$273,544	171	177	98.75%	188	12.53
April	2011	22	\$16,145,863	\$741,318	\$733,902	\$345,130	128	183	98.99%	185	8.40
May	2011	19	\$6,140,330	\$326,738	\$323,175	\$320,000	103	97	98.90%	193	10.15
June	2011	21	\$7,153,710	\$347,655	\$340,652	\$272,000	49	61	97.98%	204	9.71
July	2011	18	\$6,205,111	\$351,668	\$344,728	\$351,070	89	115	98.02%	213	11.83
August	2011	20	\$7,190,725	\$362,247	\$359,536	\$324,955	121	122	99.25%	202	10.10
September	2011	10	\$2,680,253	\$257,566	\$268,025	\$234,462	48	45	104.06%	211	21.10
October	2011	14	\$4,004,803	\$278,674	\$286,057	\$277,541	32	32	102.64%	210	15.00
November	2011	14	\$4,553,795	\$345,823	\$325,271	\$286,587	92	121	94.05%	194	13.85
December	2011	18	\$4,689,872	\$264,034	\$260,548	\$272,674	117	111	98.67%	176	9.77
January	2012	11	\$3,124,457	\$283,000	\$284,041	\$279,880	100	102	100.36%	174	15.81
<b>Annual:</b>		<b>192</b>	<b>\$69,247,077</b>	<b>\$364,889</b>	<b>\$360,661</b>	<b>\$303,072</b>	<b>103</b>	<b>114</b>	<b>98.84%</b>	<b>194</b>	<b>12.12</b>

Month	Year	Monthly Sales	Monthly Volume	Avg List \$	Avg Sale \$	Median Sold \$	Avg DOM	Avg CDOM	% Sold/List	Current Inventory	Months Inventory
February	2012	13	\$3,774,955	\$287,243	\$290,381	\$246,469	62	74	101.09%	182	14.00
March	2012	23	\$8,405,809	\$364,496	\$365,469	\$312,769	79	102	100.26%	188	8.17
April	2012	23	\$8,969,663	\$405,558	\$389,985	\$275,000	110	158	96.16%	202	8.78
May	2012	25	\$8,913,043	\$350,324	\$356,521	\$314,000	127	92	101.76%	191	7.64
June	2012	34	\$11,899,256	\$352,536	\$349,978	\$326,354	49	56	99.27%	185	5.44
July	2012	15	\$5,063,888	\$330,841	\$337,592	\$326,241	80	116	102.04%	184	12.26
August	2012	25	\$7,478,454	\$302,658	\$299,138	\$279,500	82	77	98.83%	183	7.32
September	2012	22	\$7,329,000	\$339,843	\$333,136	\$275,500	87	91	98.02%	177	8.04
October	2012	11	\$7,736,437	\$1,012,007	\$703,312	\$379,390	129	145	69.49%	173	15.72
November	2012	13	\$5,548,849	\$429,229	\$426,834	\$373,388	45	43	99.44%	179	13.76
December	2012	29	\$10,080,739	\$354,730	\$347,611	\$355,124	64	67	97.99%	168	5.79
January	2013	15	\$4,691,865	\$320,845	\$312,791	\$293,000	61	66	97.48%	166	11.06
<b>Annual:</b>		<b>248</b>	<b>\$89,891,958</b>	<b>\$379,061</b>	<b>\$362,467</b>	<b>\$317,074</b>	<b>80</b>	<b>88</b>	<b>95.62%</b>	<b>182</b>	<b>8.80</b>

<b>Month</b>	<b>Year</b>	<b>Monthly Sales</b>	<b>Monthly Volume</b>	<b>Avg List \$</b>	<b>Avg Sale \$</b>	<b>Median Sold \$</b>	<b>Avg DOM</b>	<b>Avg CDOM</b>	<b>% Sold/List</b>	<b>Current Inventory</b>	<b>Months Inventory</b>
<b>February</b>	2013	16	\$7,558,658	\$495,849	\$472,416	\$329,737	105	107	95.27%	202	12.62
<b>March</b>	2013	15	\$5,052,725	\$347,350	\$336,848	\$285,000	103	159	96.97%	217	14.46
<b>April</b>	2013	21	\$9,102,737	\$455,986	\$433,463	\$330,610	43	88	95.06%	202	9.61
<b>May</b>	2013	31	\$13,420,560	\$436,156	\$432,921	\$367,000	51	47	99.25%	210	6.77
<b>June</b>	2013	35	\$13,203,504	\$389,328	\$377,242	\$335,000	63	76	96.89%	211	6.02
<b>July</b>	2013	28	\$10,826,859	\$391,222	\$386,673	\$325,681	73	58	98.83%	209	7.46
<b>August</b>	2013	26	\$10,070,482	\$392,007	\$387,326	\$362,500	54	49	98.80%	195	7.50
<b>September</b>	2013	20	\$7,907,990	\$395,643	\$395,399	\$414,836	46	39	99.93%	197	9.85

<b>October</b>	2013	21	\$9,028,214	\$439,097	\$429,914	\$383,000	142	104	97.90%	201	9.57
<b>November</b>	2013	13	\$6,216,515	\$484,775	\$478,193	\$430,000	129	105	98.64%	187	14.38
<b>December</b>	2013	15	\$8,222,253	\$574,955	\$548,150	\$462,990	45	45	95.33%	185	12.33
<b>January</b>	2014	5	\$2,233,664	\$468,520	\$446,732	\$299,000	240	234	95.34%	179	35.80
<b>Annual:</b>		<b>246</b>	<b>\$102,844,161</b>	<b>\$428,521</b>	<b>\$418,065</b>	<b>\$364,990</b>	<b>77</b>	<b>78</b>	<b>97.55%</b>	<b>200</b>	<b>9.75</b>

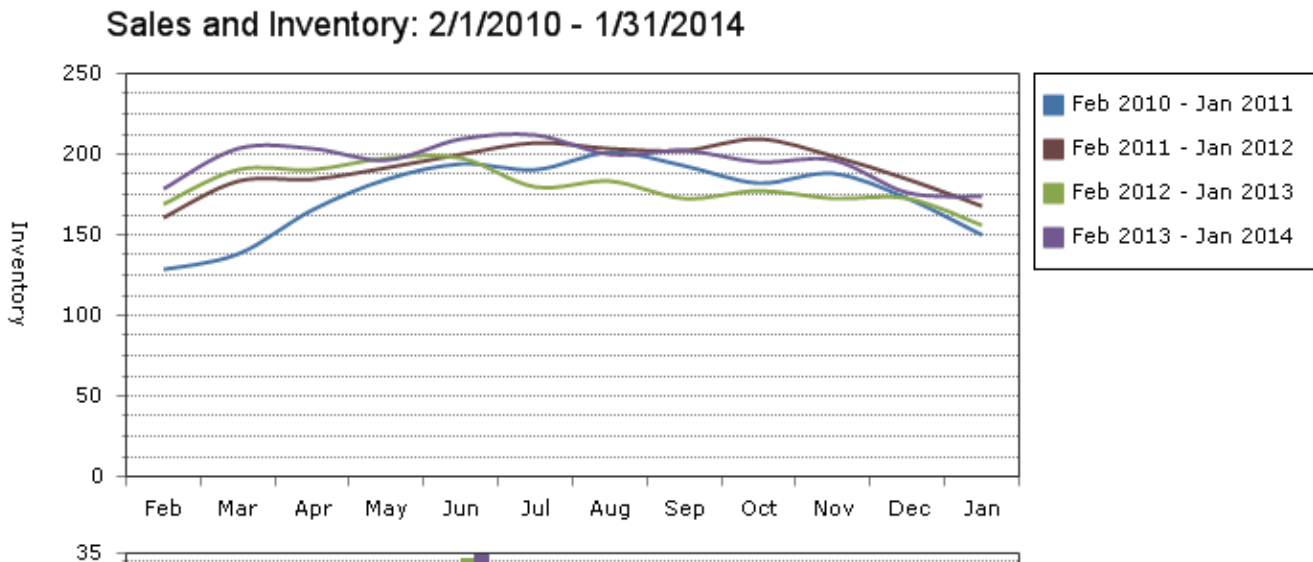
<b>Annual:</b>	<b>2010 - 2014</b>	<b>875</b>	<b>\$325,783,806</b>	<b>\$382,609</b>	<b>\$372,324</b>	<b>\$321,290</b>	<b>85</b>	<b>96</b>	<b>97.31%</b>	<b>188</b>	<b>10.31</b>
----------------	--------------------	------------	----------------------	------------------	------------------	------------------	-----------	-----------	---------------	------------	--------------

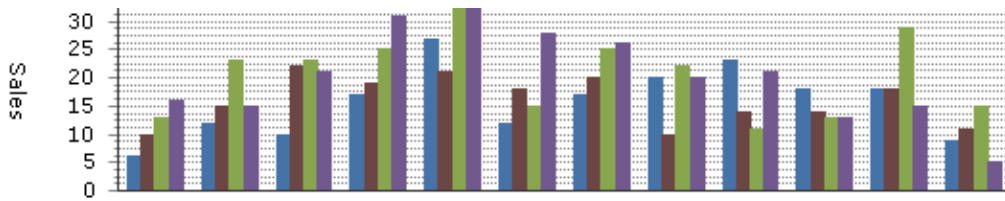
**Note:** The "Current Inventory" column(s) reflect the number of active(on market) listings on the 16th day of each month.

The "Months Inventory" column(s) value(s) equal "Current Inventory" divided by "Monthly Sales".

This reflects how many months it would take to sell out of inventory at the current month's rate of sale.

- Total Months Inventory = Total Current Inventory / (Total Monthly Sales/12 Months)





--Information on this report is not guaranteed. There is no express or implied warranty by MLS of the accuracy of information which should be independently verified.--

Copyright: 2014 by the Charlottesville Area Association of REALTORS®.  
 Jim Duncan - www.RealCentralVA.com - 434-242-7140  
 Prepared by JIM DUNCAN of NEST REALTY GROUP on Monday, February 10, 2014 3:00 PM.